

Fermat-1 RT 500MD Log

ARC8A-AA
SON825

id13_0c_02
id13_0c_02

MWD_10

id13_0c_02

Format: Fermat-1 ARC Sonic Vertical Scale: 1:500

Graphics File Created: 28-Dec-2008 18:40

Parameters

DLIS Name	Description	Value
DO	Depth Offset	0.0 m

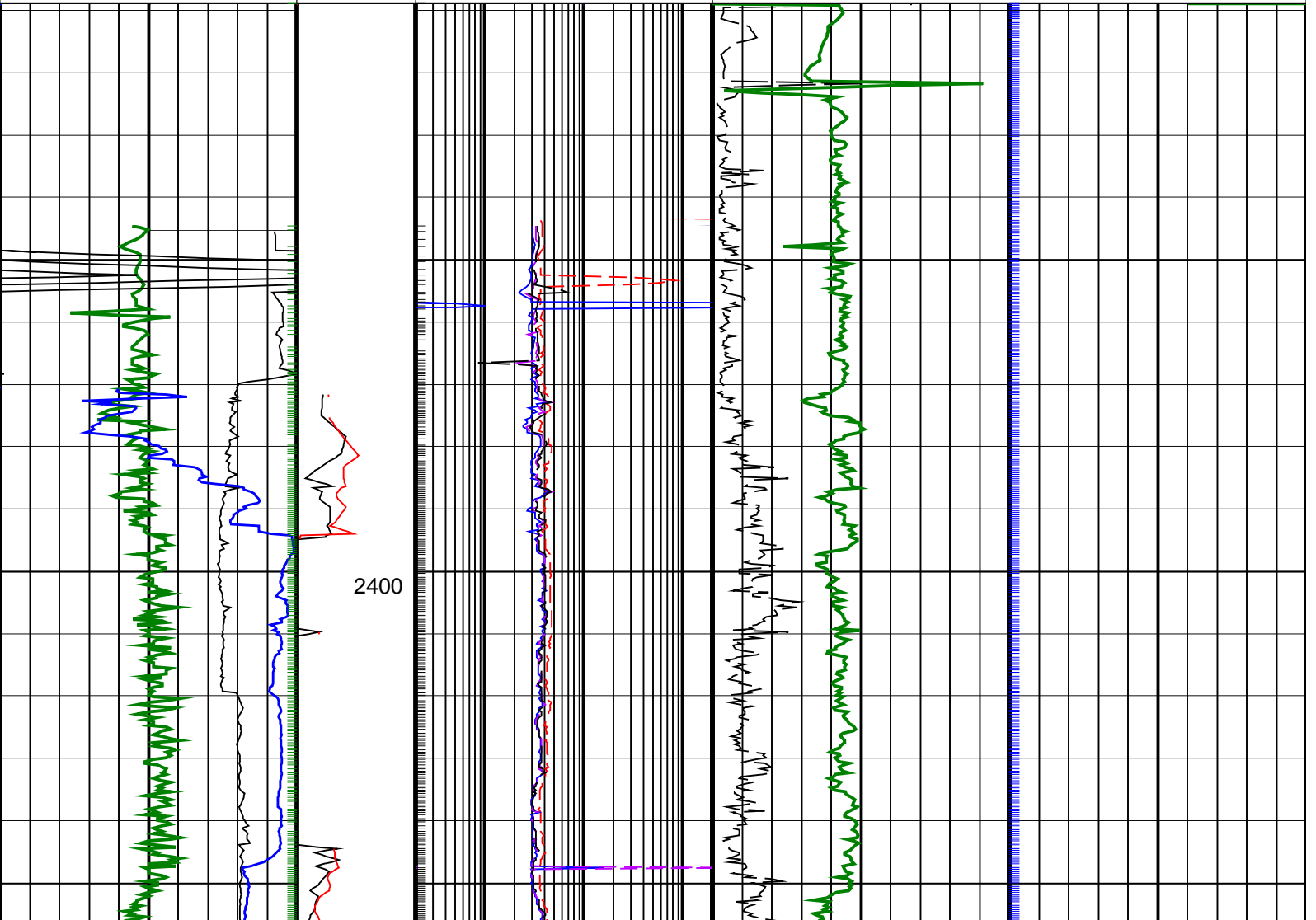
PIP SUMMARY

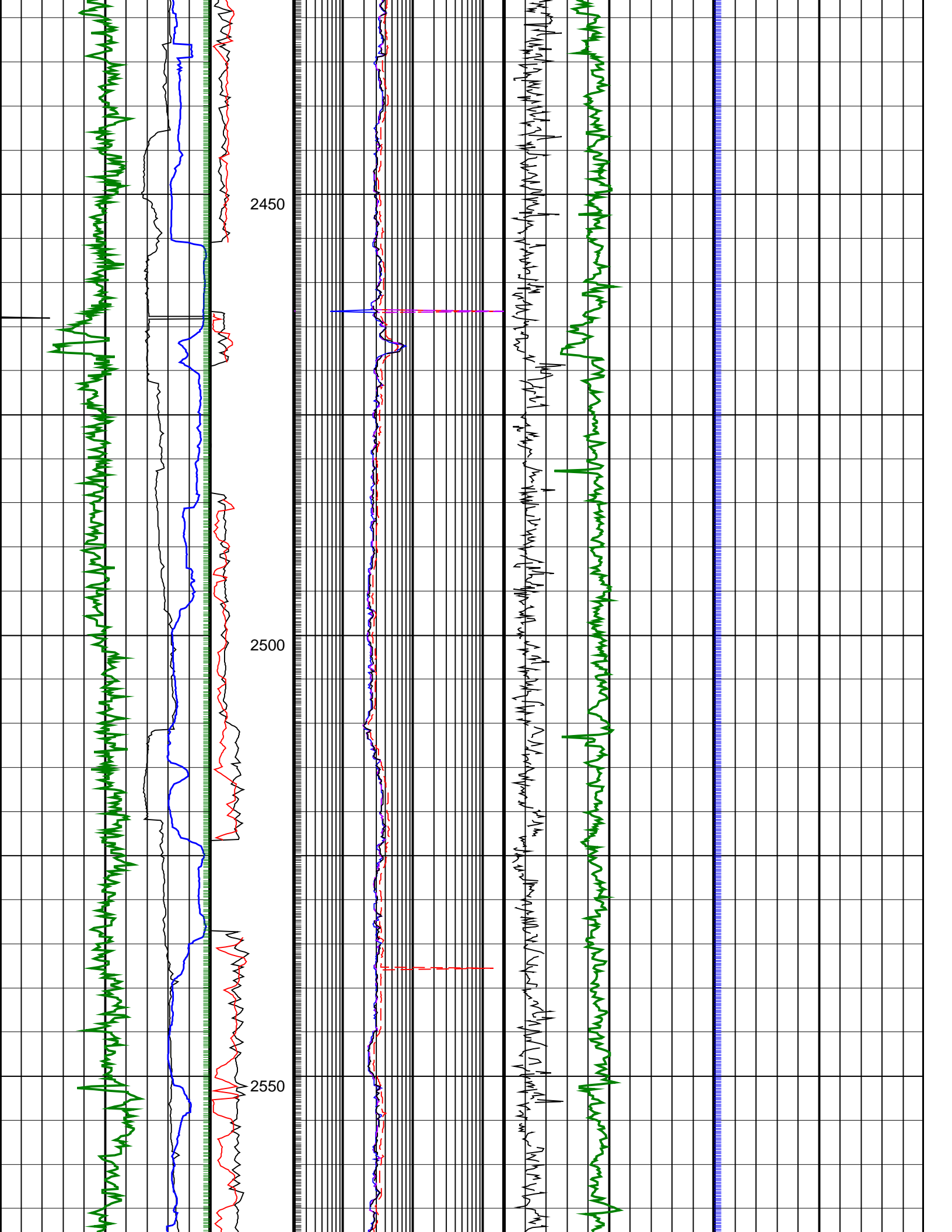
├ Gamma Ray Samples

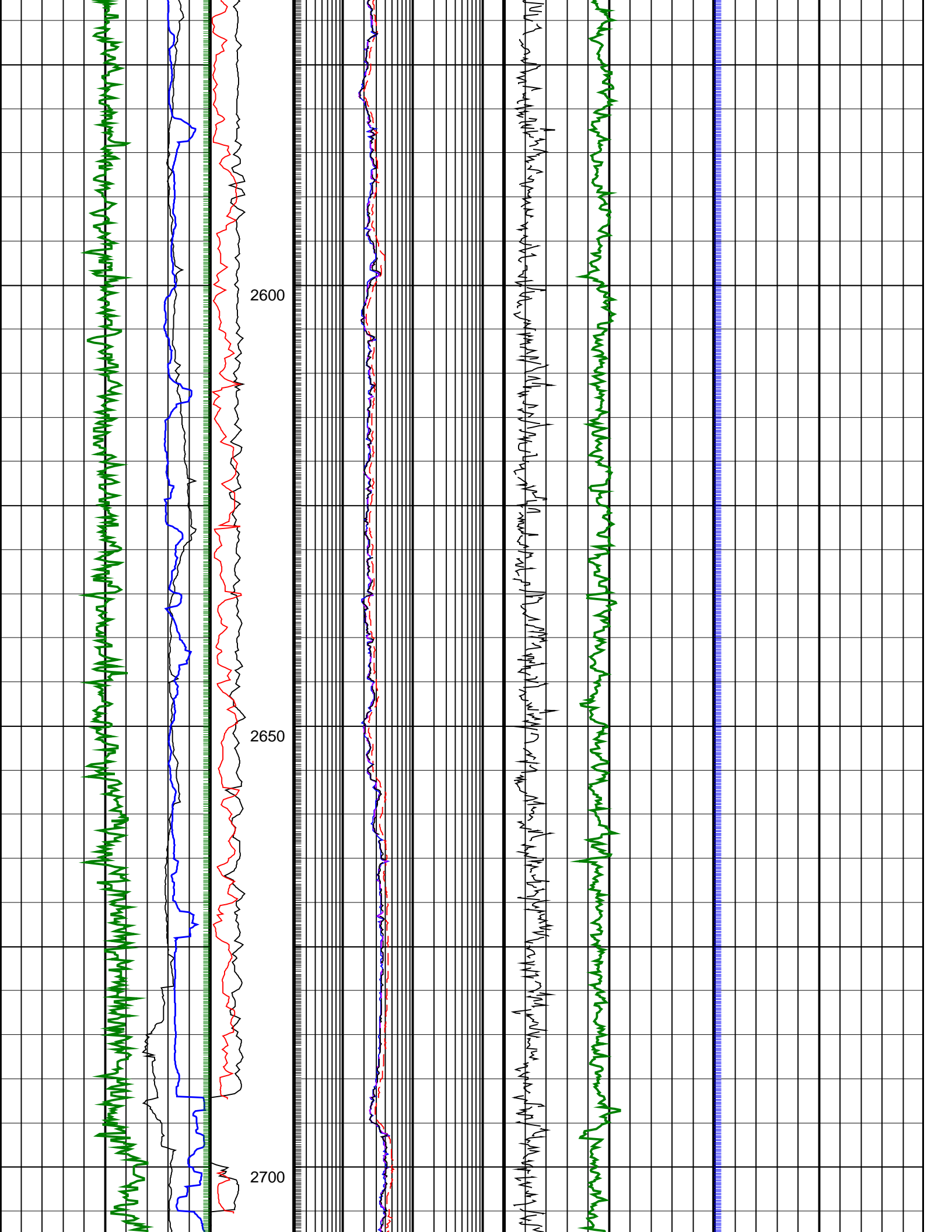
Delta-T Samples ┘

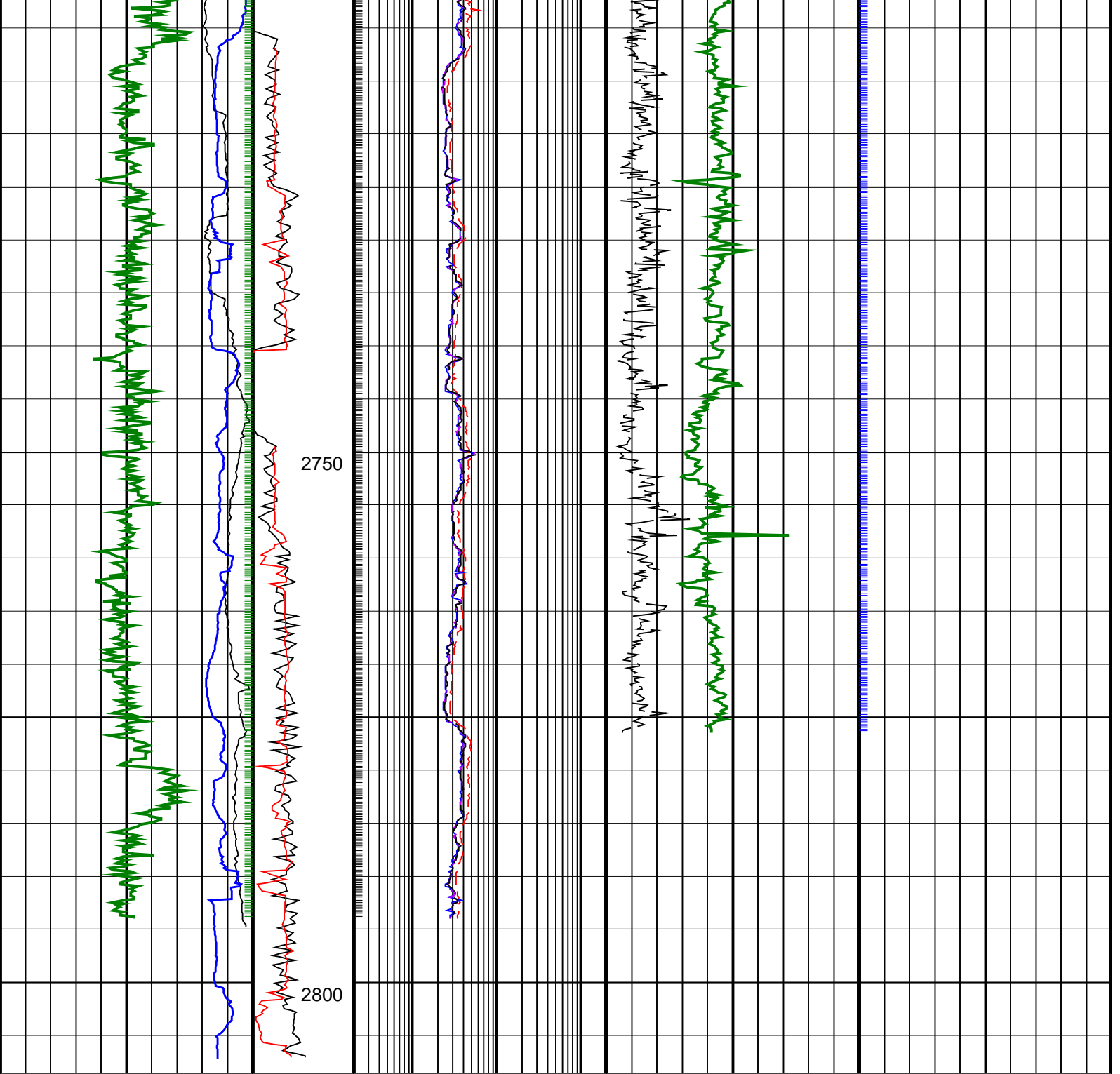
└ Resistivity Samples

<p>ARC Gamma Ray, Real-Time (ARC_GR_RT)</p> <p>0 (GAPI) 200</p>	<p>ARC BHCorr Phase-Shift Resistivity 40-in. at 2 MHz, Real-Time (P40H_RT)</p> <p>0.2 (OHMM) 200</p>	
<p>ARC Equivalent Circulating density (ECD_ARC_RT)</p> <p>9.5 (LB/G) 10.5</p>	<p>MWD Collar RPM (CRPM_RT)</p> <p>0 250</p>	<p>ARC BHCorr Phase-Shift Resistivity 16-in. at 2 MHz, Real-Time (P16H_RT)</p> <p>0.2 (OHMM) 200</p>
<p>ROP*5 (ROP5)</p> <p>200 (M/HR) 0</p>	<p>PKPK_RPM (Stick_RT)</p> <p>0 500</p>	<p>ARC BHCorr Attenuation Resistivity 40-in. at 2 MHz, Real-Time (A40H_RT)</p> <p>0.2 (OHMM) 200</p>
		<p>Delta-T Compressional, Real-Time (DTCO_RT)</p> <p>40 (US/F) 240</p>
		<p>Coherence at Compressional Peak, Real-Time (CHCO_RT)</p> <p>4 (----) 1</p>









ROP*5 (ROP5) 200 (M/HR) 0	PKPK_RPM (Stick_RT) (RPM) 0 500	ARC BHCorr Attenuation Resistivity 40-in. at 2 MHz, Real-Time (A40H_RT) (OHMM) 0.2 200	Coherence at Compressional Peak, Real-Time (CHCO_RT) 4 (----) 1
ARC Equivalent Circulating density (ECD_ARC_RT) (LB/G) 9.5 10.5	MWD Collar RPM (CRPM_RT) (RPM) 0 250	ARC BHCorr Phase-Shift Resistivity 16-in. at 2 MHz, Real-Time (P16H_RT) (OHMM) 0.2 200	Delta-T Compressional, Real-Time (DTCO_RT) (US/F) 40 240
ARC Gamma Ray, Real-Time (ARC_GR_RT) (GAPI) 0 200		ARC BHCorr Phase-Shift Resistivity 40-in. at 2 MHz, Real-Time (P40H_RT) (OHMM) 0.2 200	

PIP SUMMARY

‡ Gamma Ray Samples

Delta-T Samples †

‡ Resistivity Samples

IDEAL Version: ID13_0C_14

IDF

ARC8A-AA
SON825

id13_0c_02
id13_0c_02

MWD_10

id13_0c_02